

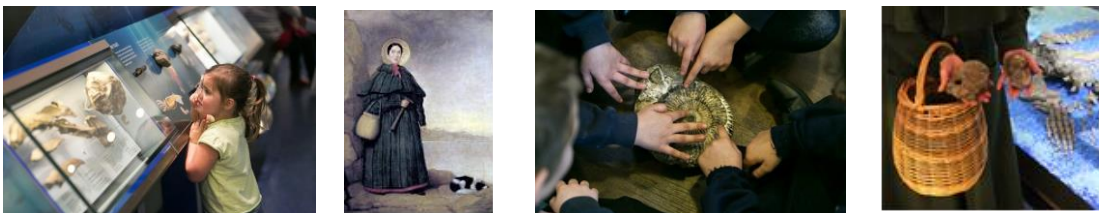
Information for Teachers

Under the Jurassic Sea EYFS & KS1 Session at Peterborough Museum



150 million years ago, this area was under a shallow tropical sea, teeming with life. Peterborough Museum has a superb, internationally important collection of fossils from the Jurassic period, all found locally. Discover what creatures swam in these prehistoric seas.

Be a Palaeontologist!



Be a Palaeontologist in our Jurassic Gallery! Go under the sea and unearth real fossils. Find out what these tell us about life millions of years ago and what we know about the people who found them. Observe, enquire, identify, record, classify and present your findings!

Alternatively, you can meet the famous fossil hunter Mary Anning. Mary is a significant person from the past who shaped our understanding of the world and relates to our collection in that she found the first whole Ichthyosaur skeleton – when she was just 10 years old! Mary will introduce herself and show the children around the Jurassic Gallery. Children will handle fossils Mary has found and the children can help to identify them using the gallery.

Jurassic Clay Creatures and their Habitats



Get crafty and model a Jurassic sea creature out of clay. Then make a paper craft habitat for your creature to safely live in. The habitats can be made in groups or individually.

Please bring boxes so that you can safely transport these back to school!

National Curriculum links: History, English, Science, Art.



Learning objectives:

Participating in these 'Under the Jurassic Sea' activities, pupils will:

- make observations of the fossils and the marine reptiles.
- talk about features of the marine reptiles' environment.
- use spoken language to develop understanding of this past life and landscape through speculating, hypothesising, imagining and exploring ideas.
- participate in discussions and presentations.
- work scientifically.
- describe and compare the structure of a variety of marine reptiles and also compare to our human body.
- explore and compare the differences between things that are living to those that are now extinct.
- identify that these marine reptiles lived in habitats to which they were suited and this links with living things and their habitats today.
- learn more about the work and the significance of fossil hunters and Palaeontologists including Mary Anning, Alan Dawn and the Leeds brothers.

"Another wonderful session which was pitched perfectly for my pupils, all of whom have additional needs. They really enjoyed the multi-sensory activities and crafts." (Teacher from Heltwate School)

"The people delivering the activities were knowledgeable and worked very well with the children. Activities were engaging and age appropriate" (Teacher from Hampton Hargate Primary)

Other information:

Duration:	Half day (up to 2 hours).
Cost:	£135 per group. Minimum charge for groups of less than 25 pupils is £120. Use of the lunchroom is an additional £15 per group.
Maximum group size:	Maximum number per group is 35 pupils. We can accommodate up to two groups. Talk to us if you would like to bring three groups.
Recommended ratio:	Minimum 1 adult to 8 students.
Booking information:	To book, please contact us by phone or email. When the activities and date are agreed, a booking form and risk assessment is emailed to you. To confirm the visit we ask that you complete the booking form and email it back to us.
A note about behaviour:	School teachers have overall responsibility for the behaviour of their pupils and we expect you to support Museum staff with this where necessary. As you know, pupils benefit significantly when school staff and adults also get involved in the activities so please join in where appropriate.
Alternative options:	We offer a 'Jurassic Funnybones' storytelling activity which includes handling in the gallery and a craft activity. This is available for one group of no more than 30 pupils and lasts 1 ½ hours. The cost is £105 / £90.
Extend your stay:	Take a 'Super Science' trail around the museum as a way of exploring the rest of the museum, focusing on materials, adaptation and habitats. This trail is independent, not museum-led and so does not incur a charge.
Outreach?	We can bring a range of fossils to your school. Please contact us for further information and costs.



We are happy to tweak the sessions according to your needs.
 We welcome and encourage pre-visits.